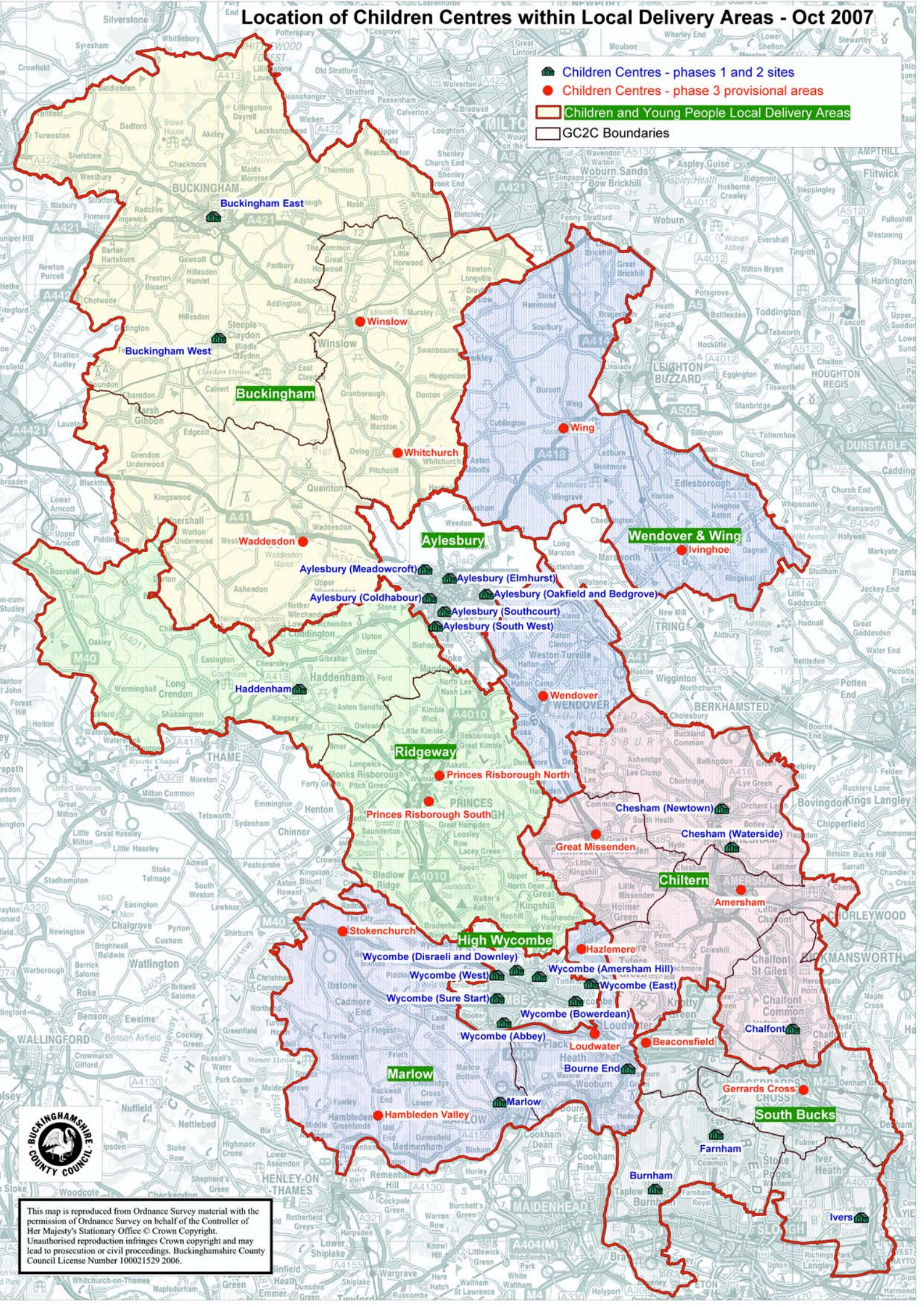


Location of Children Centres within Local Delivery Areas - Oct 2007

-  Children Centres - phases 1 and 2 sites
-  Children Centres - phase 3 provisional areas
-  Children and Young People Local Delivery Areas
-  GC2C Boundaries



This map is reproduced from Ordnance Survey material with the permission of Ordnance Survey on behalf of the Controller of Her Majesty's Stationary Office © Crown Copyright. Unauthorised reproduction infringes Crown copyright and may lead to prosecution or civil proceedings. Buckinghamshire County Council License Number 100021529.2006.